



**AQUAMONIX**  
Measure. Monitor. Master.

## PSU INVERTER POWER SUPPLIES : 2-WIRE TECHNOLOGY

### **Tonick Watering** Two Wire Technology

The Aquamonix range of power supplies are marketed globally under Tonick Watering.

We manufacture a range of region specific power transformers and invertors for use with the Tonick range of decoder translators. These are both efficient and economical and will ensure that your decoder system operates at its optimum functionality.

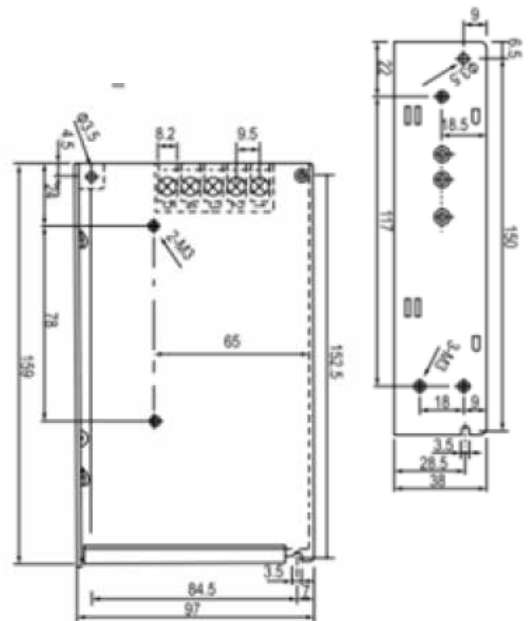


### PSU-DC/AC – INV1232

- A 32V AC pure sine wave, industrial power supply

### FEATURES

- DC 12V input
- Internal voltage limiting
- Under-voltage protection
- DIN rail mount
- Orange LED indicator
- Easily accessible blade fuse on output
- On/off switch for AC output
- Large screw terminals for DC input and AC output



## ELECTRICAL

- Input
  - Voltage: 12Vdc (11.5 – 13.8V)
  - Maximum current: 6A
  - Efficiency:  $\geq 80\%$
  - Standby/idle current: 200mA
- Output
  - Pure sine wave
  - Voltage: 32Vac (50VA)
  - Current: 1.6A continuous, 2A peak
  - Frequency: 60Hz  $\pm 1\%$

## ENVIRONMENTAL

- Operation:  $-10^{\circ}\text{C}$  to  $+49^{\circ}\text{C}$  Full output available
- De-rated operation:  $+50^{\circ}\text{C}$  to  $+70^{\circ}\text{C}$  maximum output at 0.7A
- Convection cooling, no fan

## PROTECTION

- Output short protection
- Reverse polarity protection
- Under voltage shut down below 10Vdc  $\pm 5\%$ , unit will restart when voltage is above 11Vdc
- DC input is galvanically isolated from the AC outputs, greater than 100V hipot

### Approvals

- EN60950
- EN55022

### Certificate of Origin

- Manufactured in Hungary

Please refer to the Tonick OEM Guide for integration information.